



30 Albert Embankment, Nine Elms
London SE1

GARTONJONES.COM



30 Albert Embankment, Nine Elms
London, SE1

GARTON JONES.COM

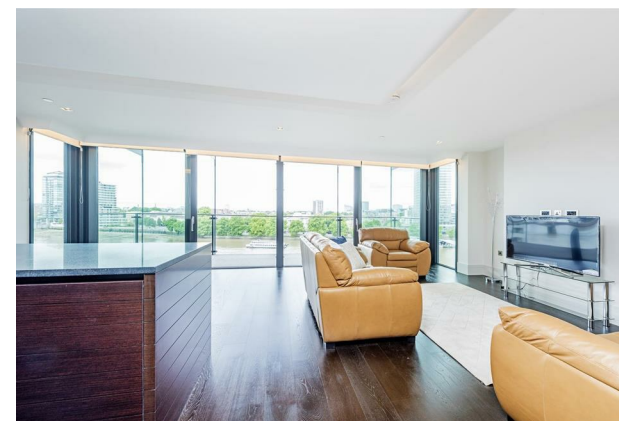
9 Albert
Embankment
London
SE1 7SP

Lettings:
+44 (0) 20 7735 1888
nineelms@gartonjones.com
www.gartonjones.com

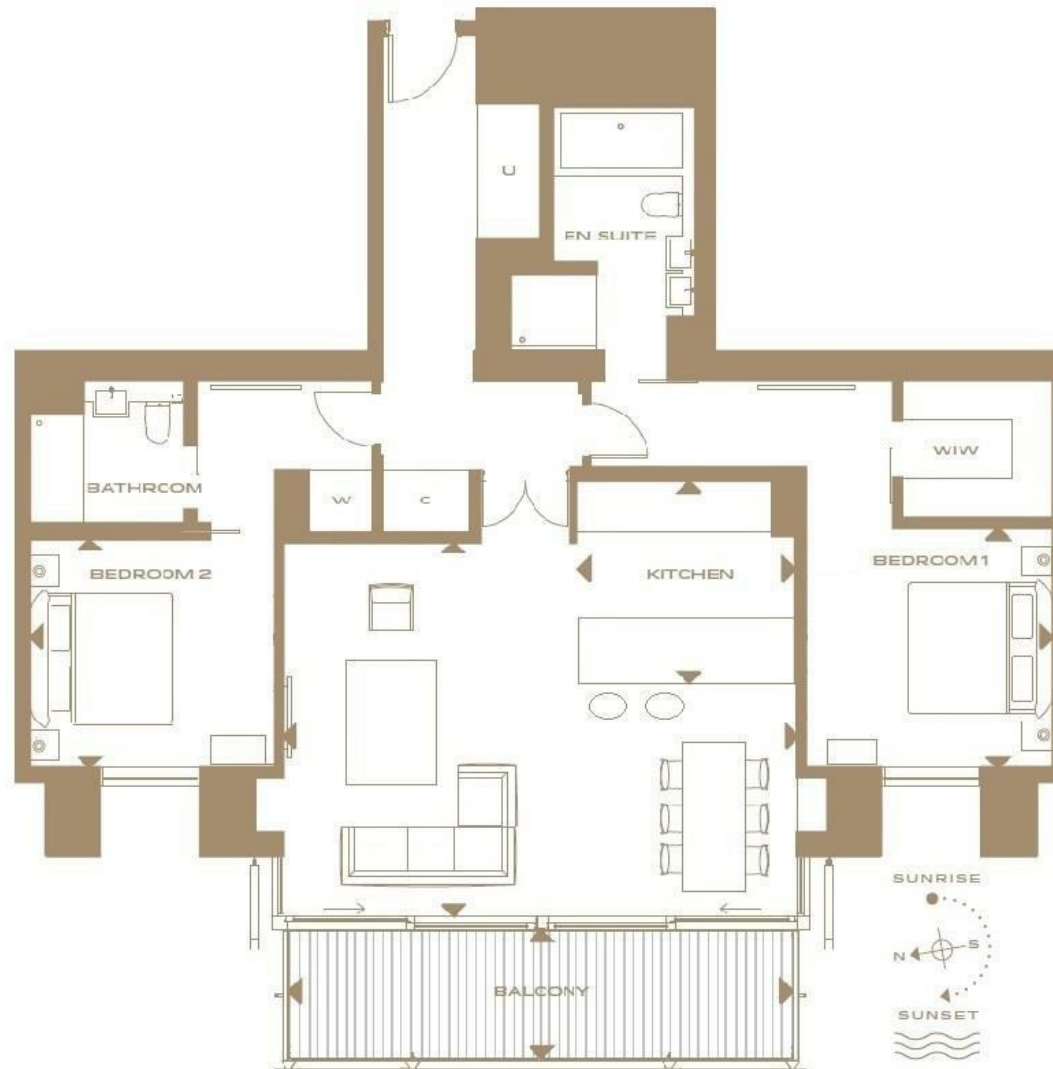
£1,038 Per Week

A stunning 2 double bedroom furnished apartment with unrivalled direct river views available to rent in Merano Residences, one of London's most prestigious riverside developments created by Rogers Stirk Harbour and Partners. This spacious property of approx. 1,177sq.ft (109sq.m) has a large reception room, open plan reception, integrated kitchen, balcony enjoying direct views of the River Thames with a picture-postcard aspect towards the Houses of Parliament and beyond, walk-in wardrobe to the master bedroom and two luxury bathrooms. Fashionably located on the South Bank of the river and within easy reach of Westminster, Chelsea and Knightsbridge, Merano Residences will also provide residents with a dedicated 24-hour concierge service, a shared external roof terrace on level 14, and you will be only 5 minutes' walk to the transport links of Vauxhall with its excellent rail, tube and bus services. The river taxi pier at St George Wharf is also within easy reach.

- 1,177sq.ft (109sq.m)
- 2 Double Bedrooms
- 2 Luxury Bathrooms (1 En-Suite)
- Walk-in Wardrobe
- Excellent Storage Throughout
- Reception Room
- Open Plan Integrated Kitchen
- Balconies with Direct River Views, Views of Parliament and Big Ben
- 24 Hour Harrods Concierge
- Close to Local Amenities Including Shops & Restaurants & Transport Links



SINGLE BAY APARTMENT
TYPE 2



| | |
|---------------------|--------------------------------|
| Living | 7.15m x 5.15m / 23'5" x 16'11" |
| Kitchen | 3.00m x 2.80m / 9'10" x 9'2" |
| Bedroom 1 | 3.40m x 3.30m / 11'2" x 10'10" |
| Bedroom 2 | 3.40m x 3.15m / 11'2" x 10'4" |
| Balcony | 7.00m x 1.75m / 22'11" x 5'9" |
| Total internal area | 109 sq m / 1,177 sq ft |
| Total external area | 12 sq m / 133 sq ft |



